

MACHIDA



medical

Portable Flexible Nasopharyngo Laryngoscope

ENT-30FC ϕ 2.0mm

ENT-30PC ϕ 3.2mm

ENT-30SC ϕ 4.2mm

The ENT-30PC is the cableless version of our bestseller ENT-30PⅢ. Keeping its patient-conscious features, this version offers greater portability and helps diagnosis in patient room or in patient home. Two other models are available with different diameters.



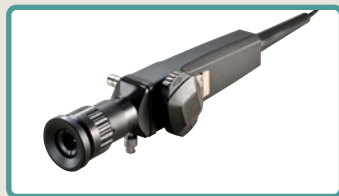
Portable

OUTSTANDING FEATURES

- The light weight and compact body allow easy single-hand operation.
- Three different diameters are available.
- The combination of the high resolution image guide and the high transmission light guide provides clear image for clinical observation and diagnosis.
- The optical system using lenses of minimal distortion provides faithful image.



System Chart



Conventional System



Monitor



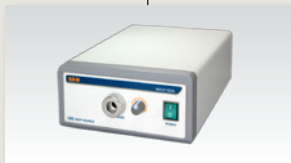
Video Camera



C-mount Lens



Light Guide Cable



Light Source

Portable System



Portable Video Camera



C-mount Adapter



Portable Light Source



Wi-Fi



Mobile Device

Carrying Case



Specifications

| | ENT-30FC | ENT-30PC | ENT-30SC |
|----------------------------|----------|----------|----------|
| Total Length | 524mm | 534mm | |
| Working Length | 310mm | 300mm | |
| Distal End Diameter | φ2.0mm | φ3.2mm | φ4.2mm |
| Insertion Portion Diameter | φ2.1mm | φ3.2mm | φ4.2mm |
| Angle of Deflection UP | 130° | | |
| Angle of Deflection DOWN | 100° | | |
| Field of View | 75° | 80° | |
| View of Direction | 0° | | |
| Depth of Focus | 3~50mm | | |

MACHIDA ENDOSCOPE CO.,LTD.

1-15-12 Abiko, Abiko-shi, Chiba,
270-1166, JAPAN
Phone:+81(0)4-7165-3083
Fax:+81(0)4-7165-3093
E-mail:overseas@machida-eds.co.jp
URL:www.machida-eds.co.jp/index_e.html

